

Riverside

♩ = 127

HIPHOPIGT OCH TOKFUNKIGT

6

A

10

FILL

14

18

22

B

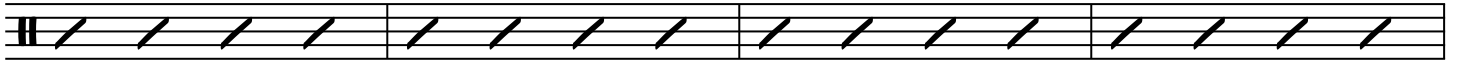
26

30

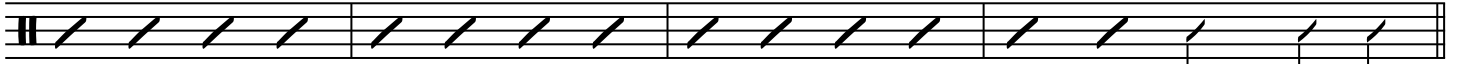
2 Drum Set

Riverside

C

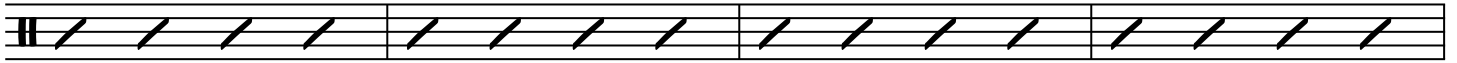


34

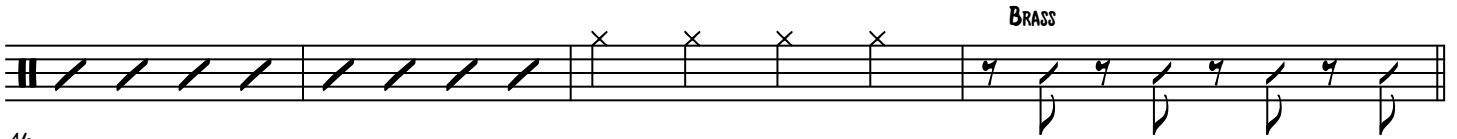


38

D

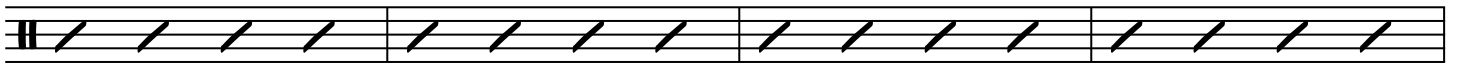


42

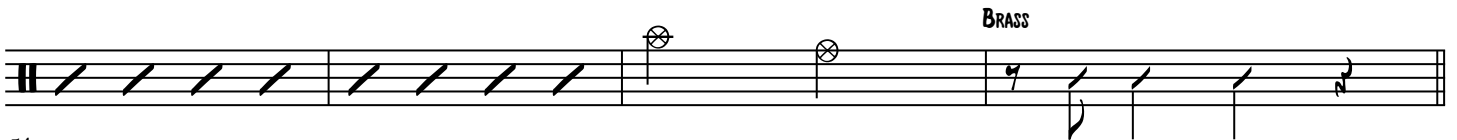


46

E

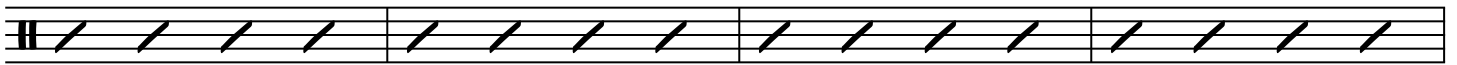


50



54

F

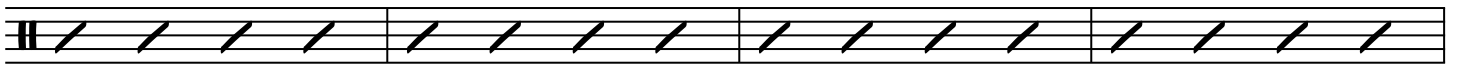


58

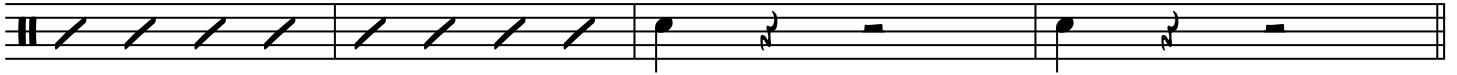


62

G

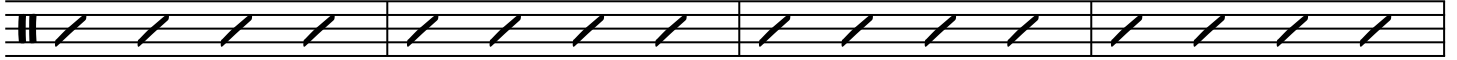


66

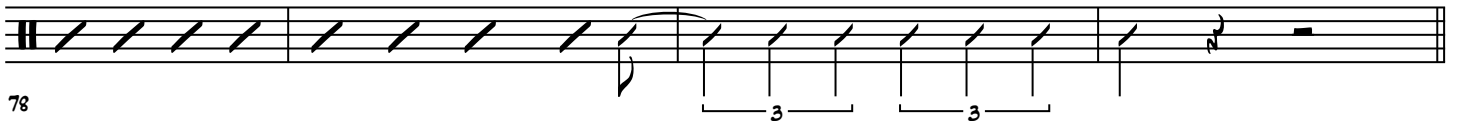


70

H

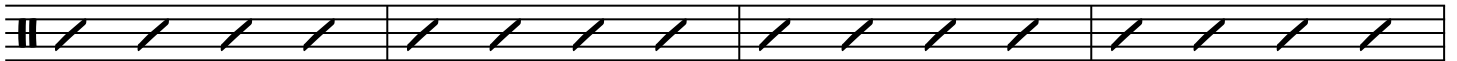


74



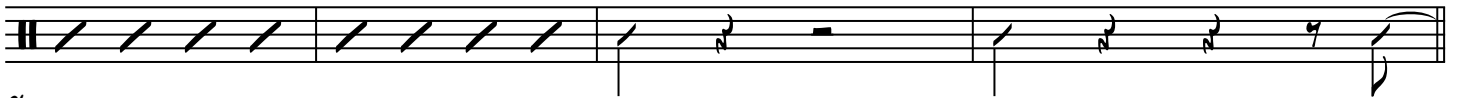
78

I



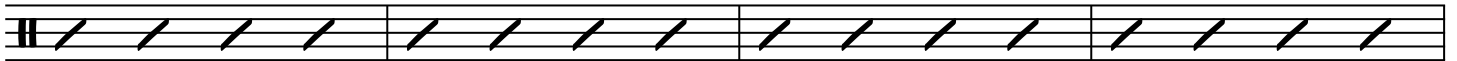
82

FILL



86

J



90

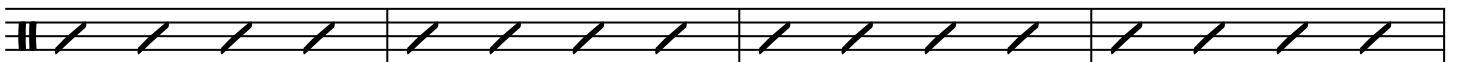
FILL



94

K

SOFT...



98



102

4 Drum Set

Riverside

L

GROOVE! AD LIB

Musical notation for L Groove! Ad Lib, measures 106-110. The notation is on a five-line staff with a treble clef. It features a series of notes and rests, with 'x' marks above the notes in measures 106, 107, 109, and 110. Measure 106 starts with a double bar line and a repeat sign. Measure 110 ends with a double bar line and repeat dots.

110

M

ON CUE

7

Musical notation for M On Cue, measures 114-120. The notation is on a five-line staff with a treble clef. It shows a large number '7' above the staff in measure 114, followed by a series of diagonal slashes representing a drum pattern. Measure 114-120 is indicated below the staff.

N

Musical notation for N, measures 122-125. The notation is on a five-line staff with a treble clef, showing a series of diagonal slashes representing a drum pattern.

122

Musical notation for N, measures 126-129. The notation is on a five-line staff with a treble clef, showing a series of diagonal slashes representing a drum pattern.

126

O

Musical notation for O, measures 130-133. The notation is on a five-line staff with a treble clef, showing a series of diagonal slashes representing a drum pattern.

130

Musical notation for O, measures 134-137. The notation is on a five-line staff with a treble clef, showing a series of diagonal slashes representing a drum pattern.

134

P

Musical notation for P, measures 138-141. The notation is on a five-line staff with a treble clef, showing a series of diagonal slashes representing a drum pattern.

138

Musical notation for P, measures 142-145. The notation is on a five-line staff with a treble clef, showing a series of diagonal slashes representing a drum pattern.

142

Musical notation for P, measures 146-149. The notation is on a five-line staff with a treble clef, showing two diamond-shaped notes with stems pointing down, indicating specific drum hits.

146